



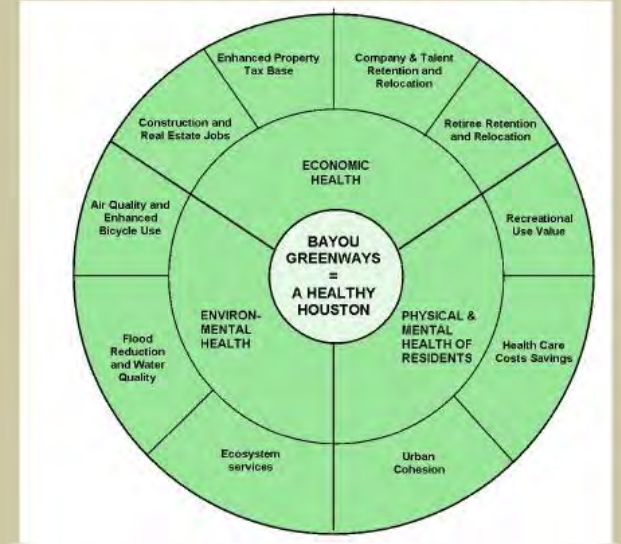
# Warren Land Trust Annual Meeting

---

Conserved Land, Economic Benefit



# The Bayou Greenway's Bottom Line



## ECONOMIC VALUE

- Increased economic vitality
- Reduced public expenditure on health care, urban management
- Higher property prices
- Attracted human capital
- Increased business confidence...

## PUBLIC SPACES

## SOCIAL VALUE

- Improved quality of life
- Increased both real and perceived security and safety
- Promoted social equality and stability
- Increased cultural vitality
- Social integration and civic pride...

## ENVIRONMENTAL VALUE

- Reduced pollution (air, noise, water)
- Increased ecological diversity
- Reduced energy consumption...



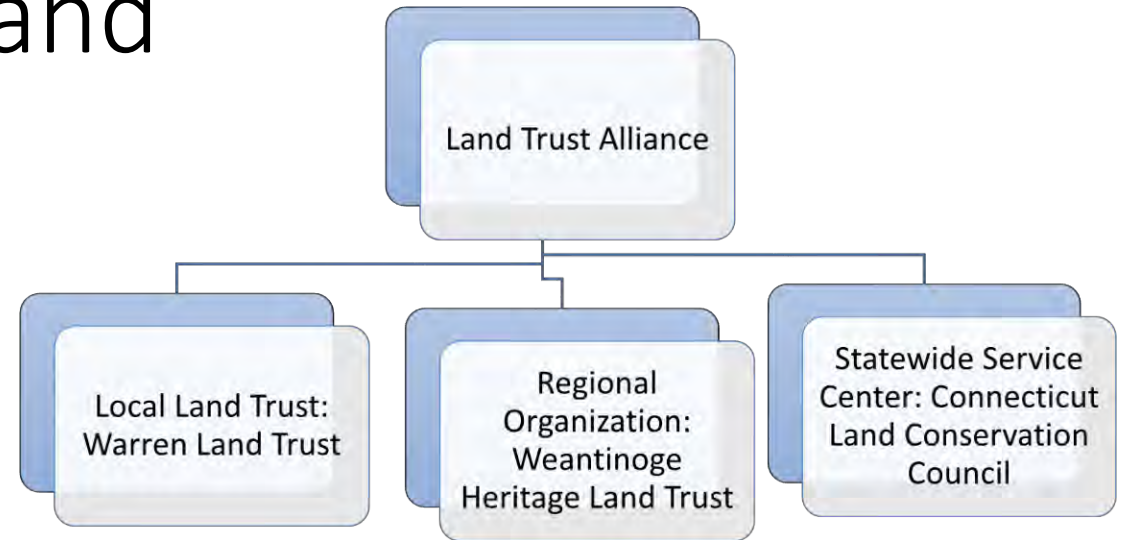




Weighing benefits of conserved land against benefits which might result if not conserved



# Land trusts in New England



A common language  
Better communication  
Better information (data) →  
Regional Conservation Partnerships

Litchfield Hills Greenprint Collaborative



# Municipal Partners and Planning

---

## Town of Warren Plan of Conservation & Development 2019-2029



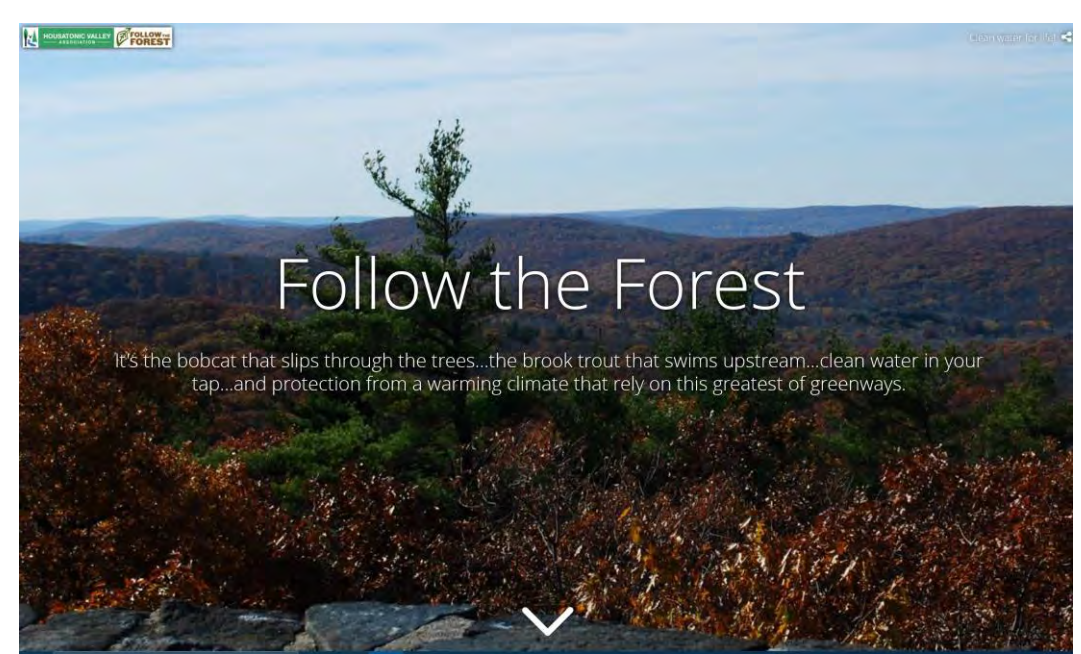
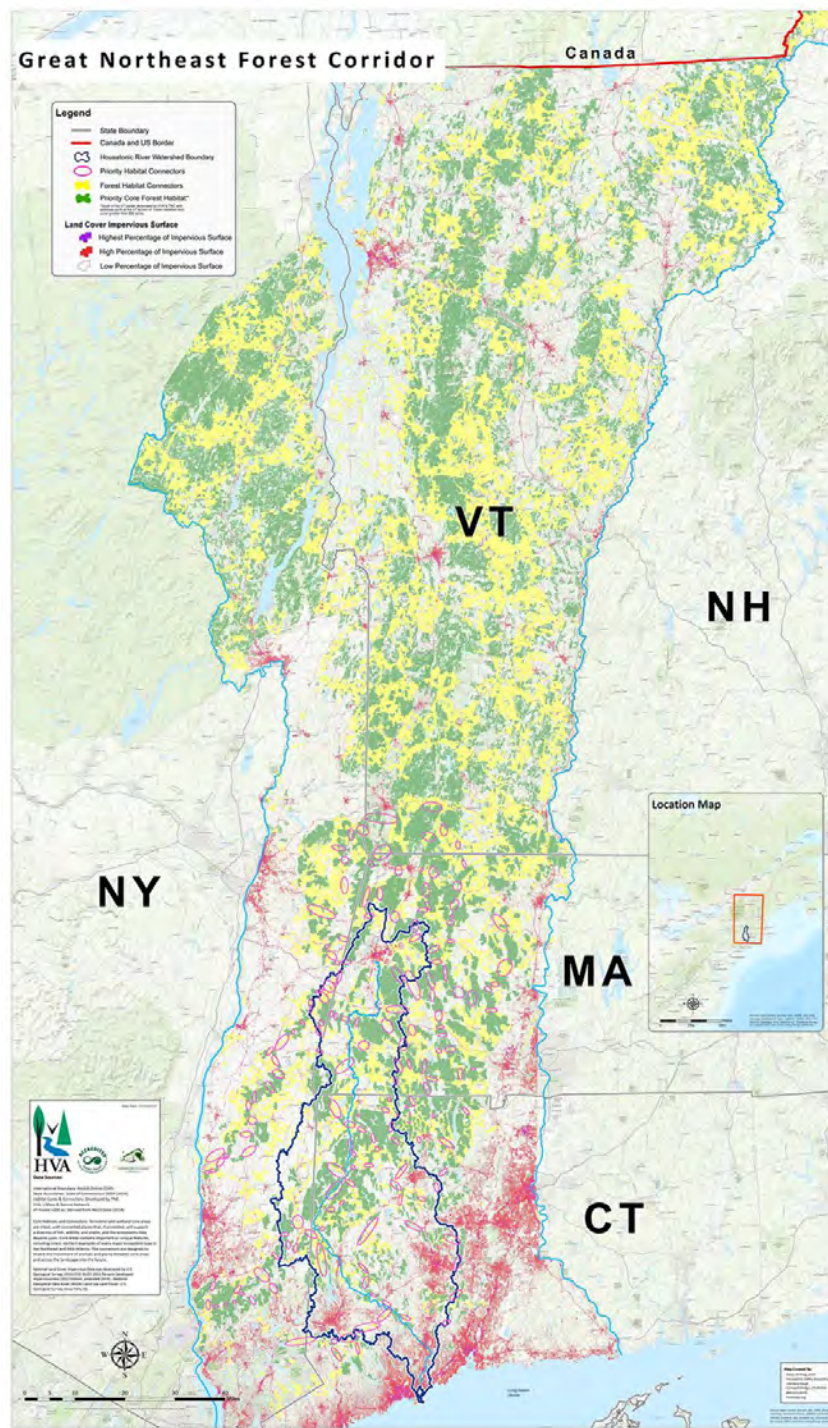
Adopted May 28, 2019

# Warren's POCD and the Balance of C&D

1. Work to Attract and Retain Young Adults & Young Families
2. Protect Farmland from Development, Support Farm Businesses, Support Sustainable Farming Practices, & Attract Young Farmers
3. Support Warren's Town Center & Small Businesses
4. Protect the Natural and Water Resources at Lake Waramaug and its Town-Wide Watershed
5. Protect Town-Wide Natural Resources and Ecosystems (natural resources & ecosystems, scenic resources)
6. Meet the Needs of Older Adult Residents
7. Invest in Community Facilities and Recreation







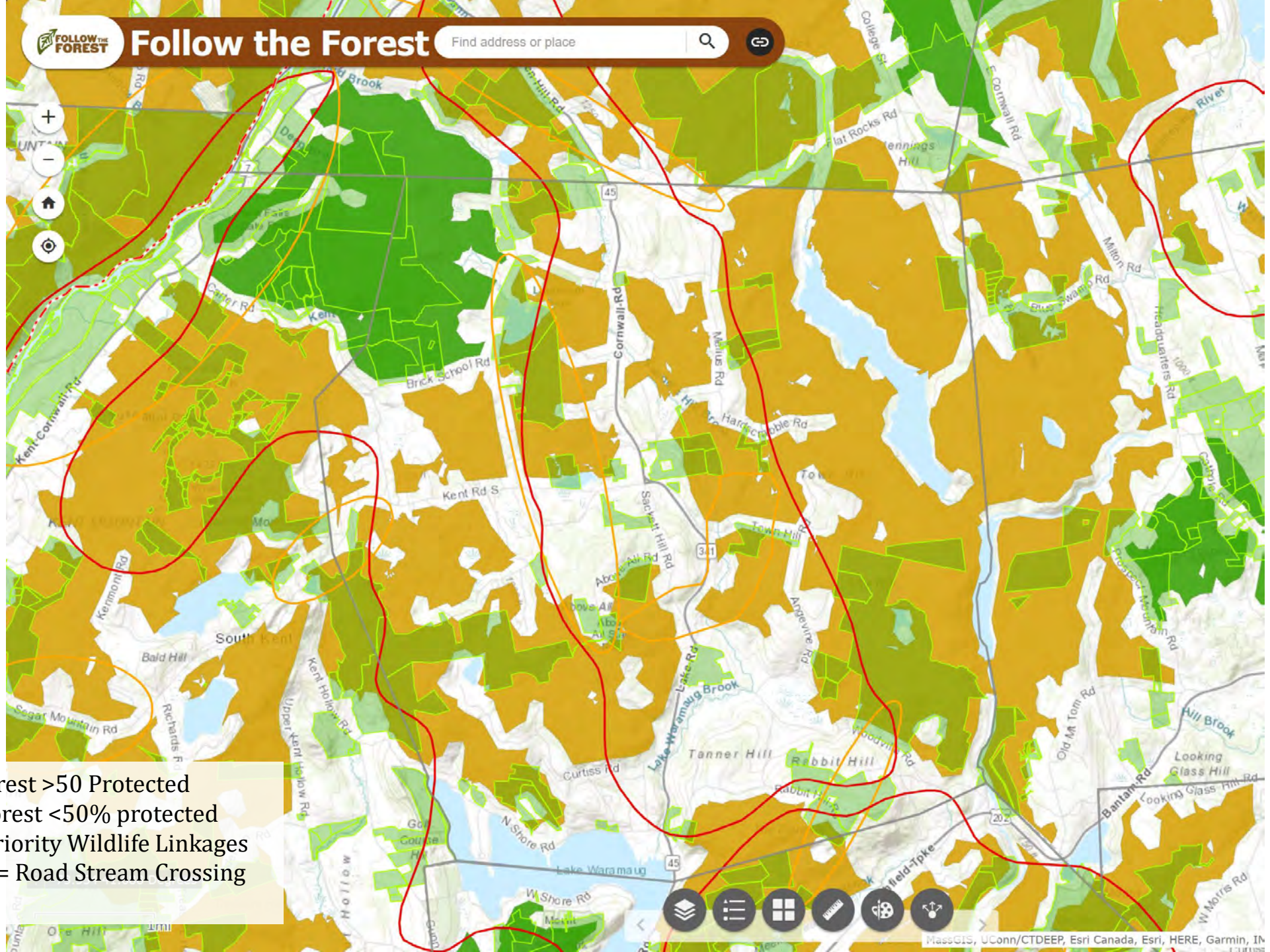
Interactive Web Map:

<https://hvatoday.maps.arcgis.com/apps/webappviewer/index.html?id=289e7ea807574c1ea9a40346097b3467>

Story Map:

<https://hvatoday.maps.arcgis.com/apps/Cascade/index.html?appid=578d52a766774787b7144b1cfea3f393>





Green = Core forest >50 Protected  
Yellow = Core forest <50% protected  
Red "blobs" = Priority Wildlife Linkages  
Orange "blobs" = Road Stream Crossing  
Pinch Point



# Greenprint Collaborative Web Map:

<https://hvatoday.maps.arcgis.com/apps/webappviewer/index.html?id=e298fb07376045129d7ecbfd452d114e>

# Northwest Hills Council of Governments Regional Trails Viewer:

<https://northwesthillscog.org/nhcogtrails/>

